

GLR

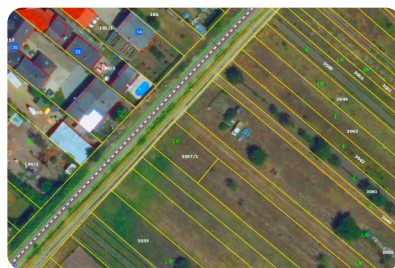
Multi-band RTK
receiver with
tilt compensation



Applications



SURVEY & STAKEOUT



GIS & MAPPING



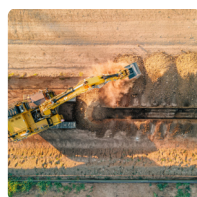
CONSTRUCTION



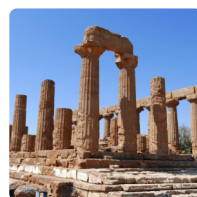
FACILITIES



INFRASTRUCTURE



EARTHWORKS



ARCHEOLOGY



FORESTRY



AGRICULTURE

All constellations All frequencies Tilt compensation Jamming proof Spoofing proof

Ultra bright
3.5" touchscreen

Rugged
IP67 polycarbonate case

Fast charging
with up to 50 W

iOS and Android app

Best in class triple frequency
hybrid antenna

Centimeter accuracy,
fix in 2 sec.

Made in Austria

API for integration
with other apps

Positioning

GNSS tracked

Galileo E1, E5a, E5b, E6
GPS L1C/A, L1C, L2C, L2P(Y), L5
BDS B1I, B2I, B3I, B1C, B2a, B2b
GLONASS G1, G2, G3
QZSS L1C/A, L1C, L2C, L5
SBAS L1C/A
NavIC L5

Channels

1406

Precision

RTK

H: 7 mm + 1 ppm, V: 14 mm + 1 ppm

PPP

H: 50 mm + 1 ppm, V: 100 mm + 1 ppm

Tilt compensation

< 20 mm at 60°

Mechanical

Receiver size L × B × H

138 × 138 × 128 mm

Operating temperature

-40°C to +75°C

Ingress Protection

IP67

Weight

1150 g

Connectivity

WiFi, BT 5.3, BLE

Ports

USB-C, Serial, Ethernet

LTE, 4G

Global modem, nano SIM card

LoRa radio

868/915 MHz, 8 km range, power 0.1 W

Protocols

Correction data

NTRIP, RTCM3

Position data

NMEA, LLH/XYZ

Data logging

RINEX, NMEA, LLH/XYZ

Computing

Processor

TI AM62x Sitara™
2x Cortex-A53 cores

Storage

16 GB

Electrical

Battery

Li-Ion 14.6V, 5000mAh, 73Wh

Operation

12 hours

Charging

USB-C: 5-20V, 3A / PD 5V, 1A
Serial Port: 3-48V, 2A / PD 5V, 1A
PoE: 53V, 25W

Errors and technical modification subject to change.

Available colors



Contact us

office@general-laser.at

general-laser.at

+43 1 890 2002