

SOKKIA

GHX2
Network Rover System

GNSS ROVER

- **Integrated RTK GNSS Receiver**
- **Large VGA Color Touchscreen**
- **Fast 806MHz Processor**
- **3.2MP Camera**
- **Internal Cellular Module**
- **Built-in *Bluetooth*[®] and Wi-Fi Connectivity**



Sokkia GHX2

The GHX2 network rover system is an all-in-one handheld GNSS receiver and field controller featuring high-speed processor, increased memory, cellular modem, built-in camera, *Bluetooth*[®], and Wi-Fi.

Using touchscreen technology, the GHX2 features direct touch access to all graphic controls. This 5.7 in. display is the main selling feature, while the Windows[®] Embedded Handheld 6.5 Professional OS provides a modern operating environment and added expandability with other application software. Graphical icon functionality allows for quick and easy operation. The fast 806MHz processor drives any MAGNET[®] field application software with ease.

With the addition of a built-in 3.2MP camera, 3.5G cellular modem and *Bluetooth*[®] / Wi-Fi capability, the GHX2 network rover system is an essential addition to any surveyor's arsenal. Both *Bluetooth*[®] and Wi-Fi are standard features eliminating the need for expensive upgrades. The Sokkia GHX2 has dual hot-swappable batteries capable of up to 16 hours of operation. Additional accessories such as a dashboard mount and external battery charger are available to fit your needs.

Primary Features



Integrated Receiver

The GHX2 consists of a dual frequency, 72 channel GPS + GLONASS receiver, a field controller, and a precise external antenna. It is a perfect combination for collecting RTK data using network corrections including MAGNET Relay broadcast service.



External Precision Antenna

The GHX2 has a precision antenna port that can be connected to the external dual constellation, dual frequency SA300 antenna on top of a pole. This solution provides the most precise method of measurement.





Large 5.7 in. Color Screen

- 5.7 in. VGA color touchscreen
- Better visibility of controls
- No-glare screen, even in sunlight
- On-screen keyboard



Weather Sealed USB Ports

- Quickly and easily copy or upload files
- Rugged protection
- Waterproof ports
- Rubber covers keep the ports clean



Precision Antenna Connection

- Precise GNSS antenna port
- Rugged, waterproof connector
- Easy connect/disconnect
- Can be retrofit to any Mesa Geo3G controller



3.2MP Built-in Camera

- Autofocus
- 4GB of flash storage
- Store hundreds of photos
- Use a common USB memory stick to off-load images



Software

MAGNET®

A family of software solutions that streamlines the workflow for surveyors, contractors, engineers, and mapping professionals.

Field

Modern User Interface

MAGNET Field provides a bright, graphical user interface with large icons, and bright readable text. The screens not only look good, but provides fast workflows.



Easy to Use

The icon and text field interface has been optimized to provide both text and images to indicate what data is needed on each screen. Shortcut buttons and fast access tabs provide a very productive interface.



Advanced Calculations

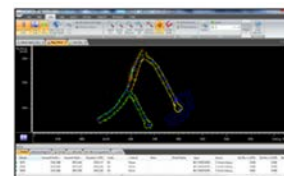
MAGNET Field not only controls the measurements of the instrument but also provides many COGO and adjustment calculations.



Office Tools

MAGNET Office Tools

The most advanced office data processing application that enables users to adjust and generate final coordinates from total stations, levels, and GNSS raw data. Office Tools will install as standalone or inside an AutoCAD® product as a user ribbon interface, right inside AutoCAD®.



GNSS	
GNSS Receiver	GPS + GLONASS
Number of Channels	72 GPS + GLONASS L1/L2
WAAS/EGNOS	Yes
L1, L2 Static	H: RMS 3mm + 0.8ppm V: RMS 4mm + 1.0ppm
RTK Accuracy	H: 10mm + 1.0ppm V: 15mm + 1.0ppm
Computer	
CPU	806MHz PXA320 Processor
OS	Microsoft® Windows® Embedded Handheld 6.5 Professional Multiple languages
Memory	256MB RAM, 4GB flash storage SD/SDHC slot, user accessible
Display	5.7 in. (145mm) Color VGA LCD (640 x 480) Portrait or landscape orientation
Keypad	15 control buttons (6 user assignable) Five-way directional navigational keypad Adjustable LED backlit keys
Camera	3.2MP resolution with autofocus
Wireless Connectivity Options	
Bluetooth® / WiFi	2.0 + EDR, Class 1 / 802.11b/g
GSM	Penta-band 3.5G GSM/GPRS/EDGE/HSDPA 850/900/ 1800/1900/2100 MHz
Environmental	
Dust/Water Protection	IP67
Operating Temperature	-22°F to 140°F (-30°C to 60°C)
MIL-STD-810G	Drop 4 ft. (1.2m), Vibration, Humidity; Tumble spec: 1,000 1.6 ft/0.5m tumbles (2,000 drops)
Dimensions (W x L x D)	5.3 x 8.6 x 2 in. (136 x 220 x 51mm)
Operating Time	In full RTK: Up to 6 hours

Standard Accessories



- Li-Ion battery
- Hand strap
- USB download cable
- Stylus
- 100-240VAC power supply
- SA300 antenna and cable
- Screen protector
- Case



Waterproof and Rugged

The GHX2 with controller is rated at IP67, which means it can be submersed in water and still function. The unit also can be dropped from 4 ft.(1.2m) and still operate. The reliability of this device in the field is unsurpassed.

SOKKIA

SOKKIA CORPORATION

16900 W. 118th Terrace Olathe, KS 66061
Phone (800) 4-SOKKIA Fax: (913) 492-0188
www.sokkia.com

Specifications subject to change without notice
©2014 Sokkia Corporation All rights reserved.
SOK-1025 Rev A 7/14

- Bluetooth® word mark and logos are registered trademarks owned by SIG, Inc. and any use of such marks by Sokkia is under license.
Other trademarks and trade names are those of their respective owners.
- Designs and specifications are subject to change without notice.
- Product colors in this brochure may vary slightly from those of the actual products owing to limitations of the printing process.

Your local Authorized Dealer is:

TOPO TRADE
Strada IACOB NEGRUZZI
nr. 44, 011094, Bucuresti-1
(021) 223 46 98
e-mail: topotrade@yahoo.com
www.topotrade.ro

DE 25 ANI
DISTRIBUTOR SOKKIA