

**TOPOTRADE**

Strada IACOB NEGRUZZI  
nr. 44, 011094, Bucuresti-1  
(+40)722 620 305  
e-mail:topotrade@yahoo.com  
[www.topotrade.ro](http://www.topotrade.ro)



**无穹创新**  
**SKYLAND INNOVATION**

# **SKYLAND INNOVATION**



***Bring 3D to Everyone***

# About Skyland Innovation



Skyland Innovation holds a strong conviction that the FUTURE IS 3D and is committed to replicating the real world in its digital form. Through the seamless integration of cutting-edge robotics and advanced 3D reconstruction technologies, we offer highly efficient and mature solutions for the digitization of the physical world. Our aim is to facilitate seamless interaction between humans and spatial environments.

**1ST**  
to be invested  
by HKCRC

Skyland Innovation is the first team being invested in and incubated by HKCRC, led by Prof. Zexiang LI, who is also known as the godfather of DJI.

**SOUND**  
Engineers  
& Service Team

At Skyland Innovation, our experienced engineers excel in robotics and product engineering, with notable achievements in publications, inventions, patents, and open-source projects. Our service team is dedicated to providing device training, timely issue resolution, and customized solutions for maximum efficiency and client satisfaction.

**40+**  
Benchmark  
Projects

We have established robust partnerships with universities and industry collaborators and actively engaged in over 40 benchmarking projects in Hong Kong and Mainland China. Notable examples include the Digital Twin of Hong Kong West Kowloon Palace Museum.

**Future  
is 3D**

Despite industrial and business collaborations, we are directing our focus towards 3D content for consumers. We believe immersive and visually captivating experiences will revolutionize entertainment, gaming, education, and virtual reality. As pioneers in this field, we are committed to pushing boundaries and delivering exceptional 3D content solutions to consumers.

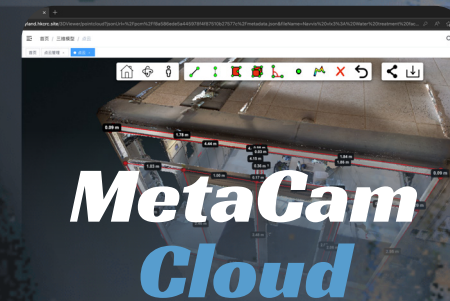
# MetaCam APP Series

Not only hardware, we CARE about our users

MetaCam Mobile allows you to interact fluently with MetaCam. By using MetaCam Mobile, you can control MetaCam, preview scanned point clouds in real time in order to tune your scanning strategy and manage your MetaCam's data storage.



MetaCam Cloud targets users that do not have powerful computing units. You can export data from MetaCam and use Skyland's server to do post-processing on our Website. Integrated with **MetaCam Viewer**, you can view, edit, measure, and export your scanned point cloud however you wish.



MetaCam Studio targets users who have a data privacy concern. You can export data from MetaCam and do post-processing on your own PC. Integrated with **MetaCam Viewer**, you can view, edit, measure and export your scanned point cloud however you wish on your own computer.



## MetaCam Workflow

Use **MetaCam Mobile** and our hardware to do the scanning



**MetaCam  
Mobile**

**Scan**

Export data to appropriate software to do post-processing

**MetaCam  
Studio**

**MetaCam  
Cloud**

**Process**

**MetaCam  
Viewer**

Use the **MetaCam Viewer** embedded inside **Cloud** and **Studio** to use, view, edit, measure, and export your scanned point cloud.

**Use**

# MetaCam ORIGINAL ed.

**Current generation, light-weight, handheld, full-color 3D reality scanner**

**Highly Integrated**

**Real-time Preview**

**User Friendly**

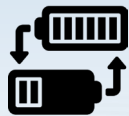
MetaCam is a highly integrated, lightweight handheld 3D real scene reconstruction scanning device. MetaCam adopts the 3D real-time reconstruction algorithm independently developed by Skyland Innovation to facilitate model acquisition, real-time preview, model generation, and data export. It can directly obtain the true-color point cloud model with high precision and a high degree of restoration, enabling you to quickly and accurately obtain the required 3D model data.



**LiDAR**



**Panoramic Color Imaging System**



**Quick Detachable Battery Module**



**Pose Orientation Reference System**



**High-Performance Edge Computing Module**



**Core scanning module**



**Quick-detachable battery module**



**Portable storage box**

## Specifications

<b>Size</b>	113mm x 122mm x 295mm
<b>Weight</b>	1.57 kg (include battery)
<b>Storage Capacity</b>	512 GB (scalable)
<b>Operation Temperature</b>	-20°C ~ 50°C
<b>Scanning Efficiency</b>	>= 5000 square meters per hour
<b>Operating Power</b>	<= 50W
<b>Number of Cameras</b>	3
<b>Camera Resolution</b>	12.3 million pixels
<b>Visual Localization</b>	Supported
<b>Laser</b>	Class 1 eye-safe; 865nm
<b>Scanning Rate</b>	655,000 per second
<b>FOV</b>	45° x 360°
<b>Range</b>	1m ~ 120m
<b>Accuracy</b>	0.7cm ~ 5cm
<b>Power Supply</b>	fast-swappable battery / external
<b>Single-Battery Capacity</b>	13,600 mAh
<b>Single-Battery Operation Time</b>	1 hr
<b>Colored Point Cloud</b>	Supported

The information presented on this page was collected by conducting measurements in a controlled and standard operating environment while adhering to prescribed procedures.

# MetaCam UNICORN ed.

Next generation, lighter and more compact, handheld, full-color 3D reality scanner

**Lighter Weight**

**Longer Battery Life**

**More Versatility**

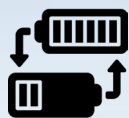
MetaCam Unicorn edition is Skyland's new product. After getting feedback from original edition buyers and users, Skyland improved MetaCam to the next level with lighter weight, longer battery life, more stability, and better hardware design. Our refined algorithm makes the output point cloud more accurate and has a more realistic color. With a universal attachment mechanism, the Unicorn edition is more versatile and can cooperate with a wider range of mobility platforms.



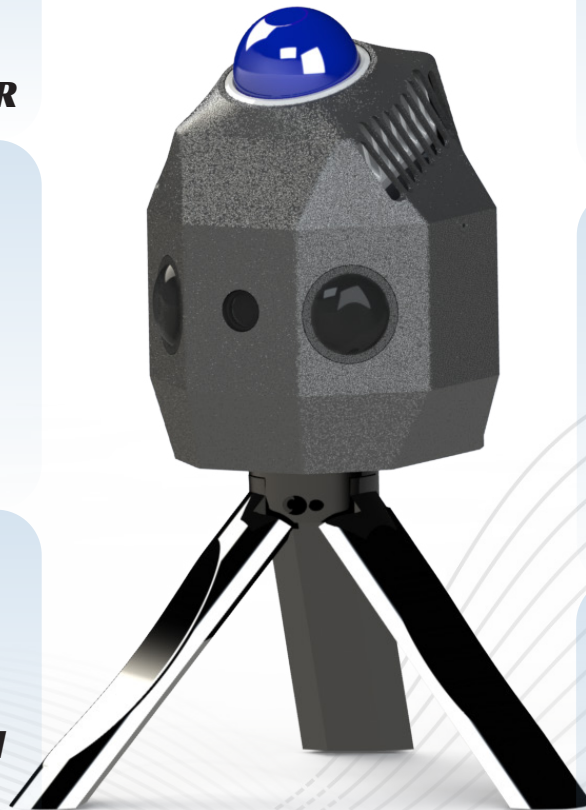
**Lighter and Better LiDAR**



**Refined Panoramic Color Imaging System**



**Swappable Battery and Battery Manager**



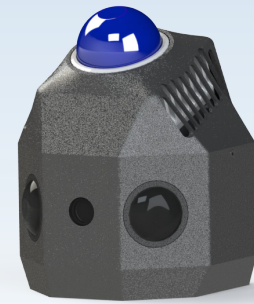
**Better Pose Orientation Reference System**



**Higher Performance Edge Computing Module**



**DSLR Hand Held Tripod**



**Core scanning module**



**Swappable battery and battery manager**



**Smaller portable storage box**

## Specifications

<b>Size</b>	112 X 100 X 157 mm
<b>Weight</b>	1.00 kg (include battery)
<b>Storage Capacity</b>	512 GB (scalable)
<b>Operation Temperature</b>	-20°C ~ 50°C
<b>Scanning Efficiency</b>	>= 5,000 square meters per hour
<b>Operating Power</b>	<= 35W
<b>Number of Cameras</b>	3
<b>Camera Resolution</b>	10.2 & 12.3 million pixels
<b>Visual Localization</b>	Supported
<b>Laser</b>	Class 1 eye-safe; 865nm
<b>Scanning Rate</b>	200,000 per second
<b>FOV</b>	59° x 360°
<b>Range</b>	1m ~ 40m
<b>Accuracy</b>	0.7cm ~ 5cm
<b>Power Supply</b>	fast-swappable battery / external
<b>Single-Battery Capacity</b>	10,200 mAh
<b>Single-Battery Operation Time</b>	1.5 hrs
<b>Colored Point Cloud</b>	Supported

# MetaCam GO

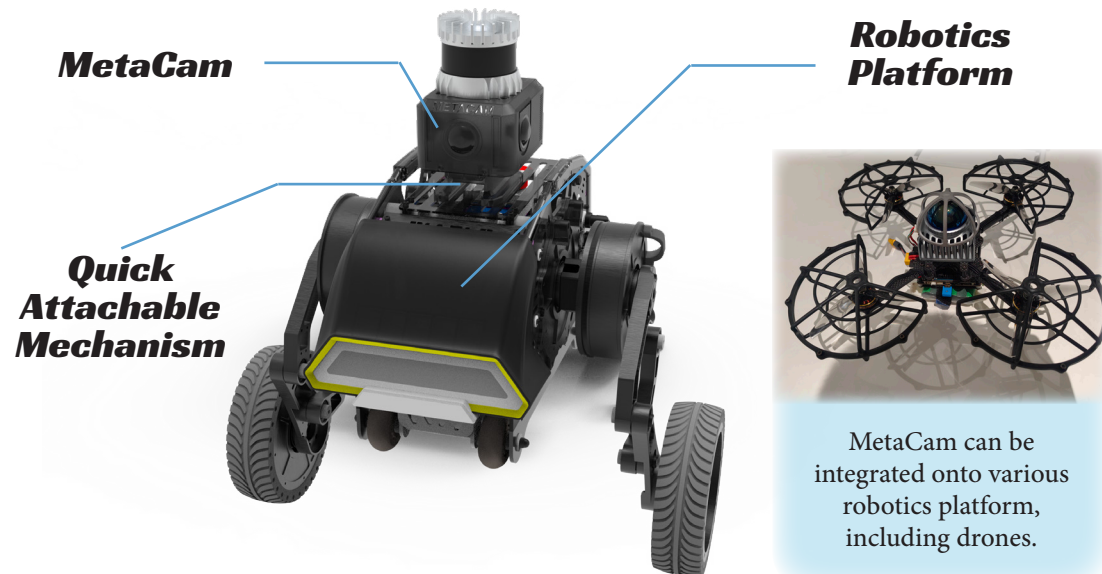
## Autonomous 3D reconstruction robot

**Modular Design**

**flexible Mobility**

**Autonomous Scanning**

MetaCam adopts a modular design. Therefore, it can be attached to and cooperate with various mobility platforms and vehicles. Skyland Innovation specifically cooperates with Direct Drive Tech and launched MetaCam GO, a highly flexible, versatile, two-wheel self-balanced robot scanner. MetaCam, serving as the EYE of the robot platform, enabled it to complete automatic scanning on its own. MetaCam GO is the future scanning solution that reduces manpower and cuts costs.



### Specifications

**Size (when fully standing)** 540 X 371 X 550 mm

**Weight** 24 kg

**Operation Temperature** -20°C ~ 35°C

**Scanning Efficiency** >= 8000 square meters per hour

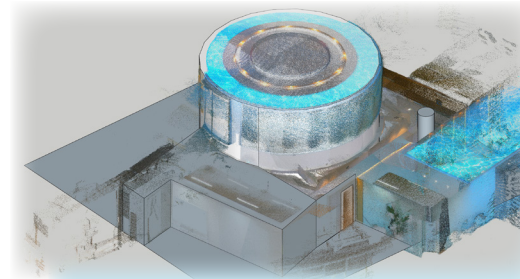
**Battery Capacity** 170 Wh

**Battery Operation Time** 30 ~ 60 mins

**Battery Charging Time** 1 ~ 2 hrs

# Applications

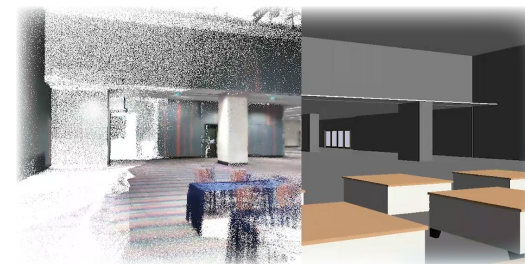
## Smart Construction



The point clouds generated by MetaCam can be imported into SketchUp, Blender, Rhino..... to **assist with modeling**.



MetaCam is being used for the **progress management** project for an interior renovation scenario.



MetaCam is used to **compare BIM and scanning results** in an interior design scenario.

## Digital Cultural Heritage



MetaCam scanning result of the **Nine-Dragon Wall** in the Forbidden City, Beijing



MetaCam scanning result of Ruins in **Old Summer Palace** in Beijing

## Digital Factory



MetaCam is used in a lubricating oil factory. Barrels, tanks, and structures are clearly seen in the point cloud scanning result. Scanning result is used for **inventory management**.

MetaCam is used in a factory to create digital twins. All the equipment, structures, and pipelines can be seen clearly. Scanning result is used for **production line planning**.



## Forestry and Agricultural

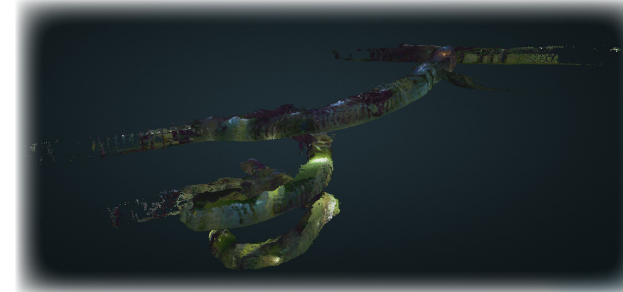


MetaCam is used in a park with trees and grass. Trees and grasses can be distinguished clearly in the scanning result. Scanning result can be used for **Ecological environment construction, tree protection and landscape design**.

MetaCam is used in a vineyard in China. Grape details can be clearly seen and distinguished. Scanning result used for **cultivation yield estimation and forecasting**.

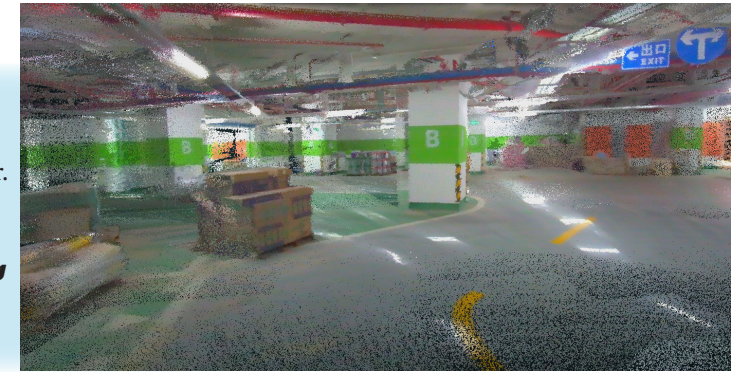


## Hermetic Space



MetaCam is being used in an underground mine located in Sichuan, China. The scanning result is used for **mineral exploration**.

MetaCam scanned the underground car park with precision and fascinating color. The signs and structures are all well preserved. Scanning result can be used for **parking facility planning and vacancy detection**.



## Record Your Memory (Extended Reality)



MetaCam is used in an old community, recording and preserving the **memories** of a granny. Details of walls, furniture, and light can be seen clearly.

MetaCam is used in an old country, recording and preserving details of walls, bricks, couplets, and plants. This is the a piece of **memory** of a young boy, hoping to preserve his childhood.



## Cooperative Partners



清華大學  
Tsinghua University



香港科技大學  
THE HONG KONG  
UNIVERSITY OF SCIENCE  
AND TECHNOLOGY



復旦大學  
FUDAN UNIVERSITY



浙江大學  
ZHEJIANG UNIVERSITY



OUSTER™



中國建築  
CHINA STATE CONSTRUCTION



## Contact Us



MKT@skylandinno.com



www.futureis3d.com



+86 13303239295



+852 6221 5803



ShenZhen, GuangDong Province, China  
HKSTP, Sha Tin, Hong Kong SAR, China



© 2023 Skyland Innovation Ltd. All rights reserved  
Some of the images used in this document are from Freepik

**TOPO TRADE**  
Strada IACOB NEGRUZZI  
nr. 44, 011094, Bucuresti-1  
(+40)722 620 305  
e-mail: topotrade@yahoo.com  
www.topotrade.ro