

SOKKIA

MADE TO FIT YOUR WORLD.

SR-S2

Handheld SLAM Scanner



Accelerate your reality capture projects

Professionals in construction surveying, geospatial, and engineering need reliable spatial data capture in challenging environments, including outdoor, indoor, and GNSS-restricted areas. Applications span site documentation, utility mapping, volume calculations, progress monitoring, and underground data capture, requiring efficiency and accurate data in complex, time-sensitive settings.

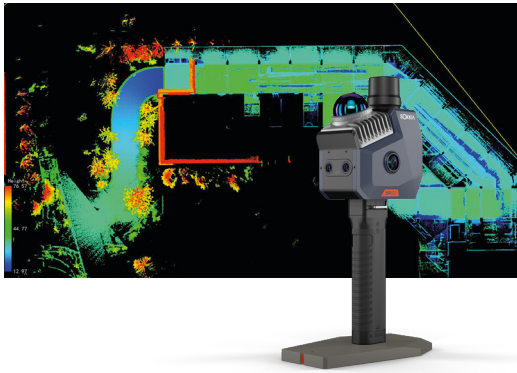
The Sokkia SR-S2 is designed to address these challenges through advanced multi-sensor fusion, integrating LiDAR-based SLAM, visual SLAM, inertial measurements, and GNSS positioning enhanced with RTK corrections. This combined approach delivers stable and repeatable positioning performance, supporting reliable results across outdoor, indoor, and GNSS-challenged environments, including dense construction sites, tunnels and mining environments.

- Capture data on the move with a truly portable solution.
- Simplify your workflow from field capture to final processing.
- Achieve survey-grade accuracy without the need for extensive setup.
- Scan diverse environments, from wide open outdoor areas to complex indoor spaces.
- Integrate seamlessly with MAGNET software for a complete solution.



Capture with Confidence. Deliver with Precision

SR-S2 combines portable, one-person data capture with real-time point cloud preview, giving immediate confidence in coverage on site. Post-processing produces accurate 3D point clouds and orthophotos, supporting applications from volume measurement to comprehensive 3D site documentation.



Seamless Workflow, Precise Results

Unlike conventional solutions that rely on multiple devices or fragmented steps, the SR-S2 supports a streamlined, end-to-end workflow - from data capture to final deliverables. Powered by advanced sensor fusion and robust hardware, it helps teams work faster in the field while delivering consistent, survey-grade results project after project.



Field and Desktop Software



MAGNET® Flow

- Collection control software, compatible with both Android and iOS platforms.
- Supports collection control, project management, real-time point cloud browsing, and firmware upgrades, etc.



Scan the QR code to download the app to your phone.



MAGNET® Bridge

- SLAM Data Processing workflow with continuous improvement in algorithms and data quality.
- Length, area and volume calculations for quick evaluations.
- Orthophoto creation to provide true-scale imagery.



The SR-S2 is more than just a SLAM scanner. This tool is built for the modern professional who demands both performance and practicality. Check the datasheets for more detailed specifications.

Get the data you need, when you need it. Contact your local Sokkia dealer to learn more.

SOKKIA

sokkia.com

Specifications subject to change without notice
©2026 Topcon Corporation All rights reserved.
SOK-1063 Rev A 05/26

Your local Authorized Dealer is:

TOPO TRADE

Strada IACOB NEGRUZZI
nr. 44, 011094, Bucuresti-1
(+40)722 620 305
e-mail:topotrade@yahoo.com
www.topotrade.ro